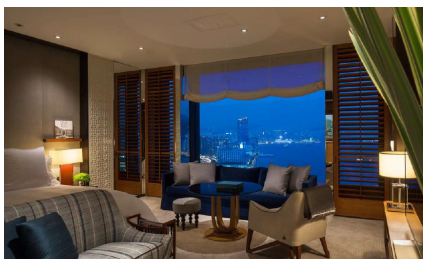


A. HOTEL ACCOMMODATION

We are the Official Travel Agency of Art Basel Hong Kong 2026

ART BASEL OFFICIAL HOTEL PARTNERS

ROSEWOOD HONG KONG (5*)



Rising majestically over Victoria Harbour in Kowloon. Hotel is the epicenter of the new Victoria Dockside arts, culture and luxury retail district, the hotel is connected to Hong Kong Island by fast convenient water, road, MTR and Star Ferry transfers.

(Room size: 53 sqm)

THE UPPERHOUSE (5*)



The Upper house is a small luxury hotel located in Admiralty. Hotel is equipped with the latest technology. A unique iPod-touch is provided in each guest room offering a comprehensive source for all hotel information

(Room size: 68 sqm)

PREFERRED HOTELS

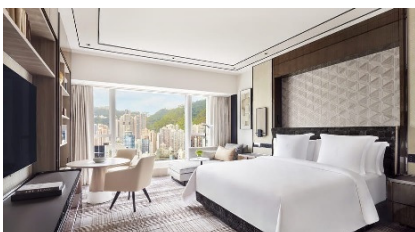
THE ST. REGIS HONG KONG (5*)



Hotel was newly built in the Wanchai-Causeway Bay district of Hong Kong, located in one of the busiest commercial area, in close proximity to the Hong Kong Convention and Exhibition Center and a major hub for foreign and Chinese cultural and arts institutions.

(Room size: 50 sqm)

FOUR SEASONS HONG KONG (5*)



On the waterfront overlooking Victoria Harbour from inside the International Finance Centre complex. With easy access to MTR subway station and luxury shopping mall.

(Room size: 45 sqm)

GRAND HYATT HONG KONG (5*)



Grand Hyatt offers a magnificent location on Hong Kong's waterfront and is connected to the Hong Kong Convention and Exhibition Centre by a direct covered walkway. The hotel is a 5-minute drive to the Central, Pacific Place and Causeway Bay business and shopping districts. Star Ferry to Kowloon, MTR Exhibition Centre station and Wanchai's dining and entertainment areas are just a 5-minute walk away.
(Room size: 40 sqm)

MANDARIN ORIENTAL HONG KONG (5*)



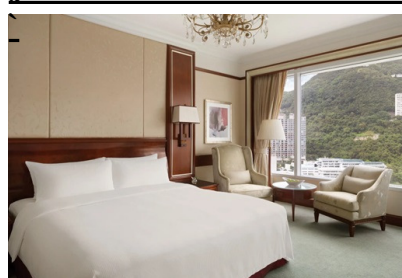
Mandarin Oriental, Hong Kong has always been a byword for elegance and impeccable service. Its excellent location, extensive dining and an award-winning spa make this the preferred choice of travelers. 501 rooms offer outstanding accommodation, while the hotel is only steps from the city's finest shopping, entertainment and historical districts
(Room size: 40 sqm)

THE MURRAY, HONG KONG (5*)



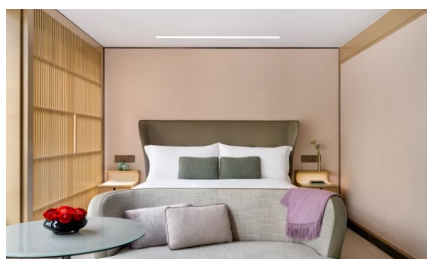
Raised high on Central District's Cotton Tree Drive, nestled beside eight hectares of verdant parkland. The hotel is within 10 minutes walking distance to Central MTR subway station, allowing guests the ease of access to any part of the city.
(Room size: 47 sqm)

JW MARRIOTT HONG KONG (5*)



Boasting a central location in the Admiralty area of the city, atop Pacific Place Mall. Hotel offers easy access to all major transportation, including MTR subway station
(Room size: 31 sqm)

REGENT HONG KONG (5*)



With a prime city centre located on the edge of Victoria Harbour in Kowloon, connect to K11 Musea at Victoria Dockside, hotel is steps away from cultural attractions, museums and key shopping. At your doorsteps is “Avenue of Stars, Art Square, Hong Kong Museum of Art, Space Museum and Cultural Centre.

(Room size: 30 - 38 sqm)

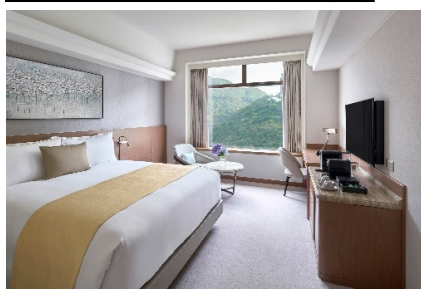
CONRAD HONG KONG (5*)



Soaring 61 floors above Pacific Place, an upscale retail and entertainment complex in Hong Kong’s central business district. Hotel offers easy access to all major transportation, including MTR subway station.

(Deluxe room: 43 sqm)

HOPEWELL HOTEL (5*)



Surrounded by the enchanting hillside greenery and facing the stunning view of Victoria harbour. Just 20-minute walk to Hon Kong Convention and Exhibition Centre. With 3-minute walk from MTR Wanchai Station. The hotel provides easy access to the major business and shopping area.

(Deluxe Room: 30 sqm)

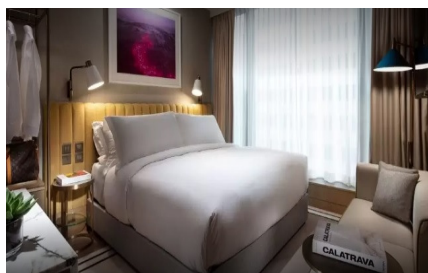
RENAISSANCE HARBOUR VIEW HOTEL (4*)



A superior first-class hotel situated on top of the impressive Hong Kong Convention & Exhibition Centre on the Wanchai waterfront. It is only a 5-minute walk through the covered walkways to major commercial buildings in Wanchai and MTR subway station. It takes approximately 5-minute drive by taxi to the Central Business District and the major shopping area.

(Room size: 28 sqm)

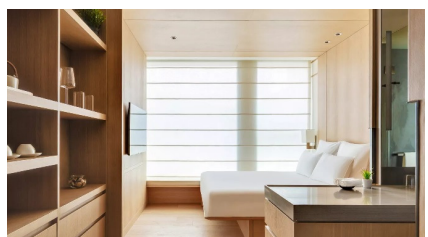
THE HARI HONG KONG (4*)



Strategically situated in Wanchai, approximately 15-minute walk to HKCEC and proximity to local attractions and sights.

(Room size: 25 sqm)

AKI HONG KONG - MGALLERY (4*)



Hidden in the heart of Wan Chai, just 8-minute walk from Hong Kong Convention and Exhibition Centre and the lively Causeway Bay shopping district. With 5-minute walk from MTR Exhibition Centre Station; 5-minute walk from MTR Wanchai Station. Star Ferry Terminal is just 5-minute away.

(Room size: 16 sqm)

HOTEL INDIGO HONG KONG ISLAND (4*)



Located in the heart of Wanchai, with easy access to the major public transportation network and commercial buildings. A 5-minute walking distance to Wan Chai MTR station; 10-minutes walking distance from Hong Kong Convention and Exhibition Centre and 40-minute car ride to Hong Kong International Airport.

(Room size: 30 sqm)

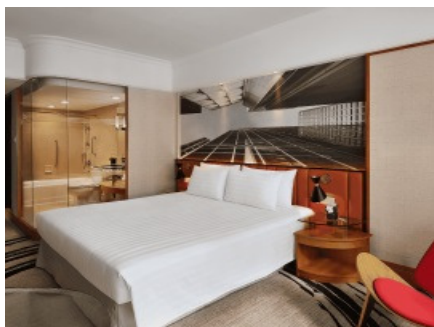
EAST, HONG KONG (4*)



Located in one of Hong Kong's business districts. It is also home to hundreds of multi-nationally listed companies and creative business. The hotel is less than 20-minute drive from Central and Causeway Bay, it is well served by both taxis and public transportation, such as the MTR and buses.

(Room size: 28 sqm)

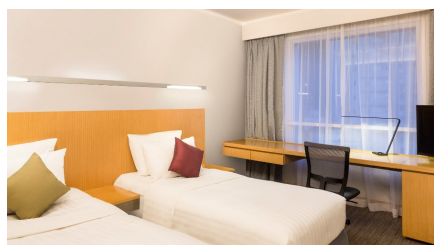
THE PARKLANE HONG KONG, AUTOGRAPH COLLECTION (4*)



Located in the heart of Causeway Bay, with stunning views of Victoria Park & Victoria Harbour, the hotel is strategically located within the business, shopping and entertainment districts and just 2-minute walk from Causeway Bay MTR station.

(Room size: 26 sqm)

NOVOTEL CENTURY HOTEL (4*)



Located in the heart of Wan Chai. Just a short stroll to Hong Kong Convention and Exhibition Centre and close to the city's renowned tourist attractions and shopping mall. With easy access to MTR Exhibition Center Station and MTR Wan Chai Station; Star Ferry Terminal is just 5-minute away.

(Room size: 23 sqm)

LAN KWAI FONG @ KAU U FONG (4*)



Conveniently located near to SoHo area. The property offers a fusion of modern comfort with a touch of oriental tradition and is situated just steps away from Sheung Wan MTR station, the Airport Express Hong Kong Station and Macau Ferry Terminal.

(Room size : 19 sqm)

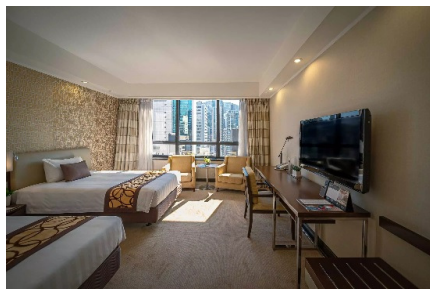
WHARNEY HOTEL (4*)



Situated in Wanchai district. Approximately 10-minute walk to HKCEC; Approximate 5-minute walk to MTR Wanchai station and 40-minute drive to HK International Airport.

(Room size: 22 sqm)

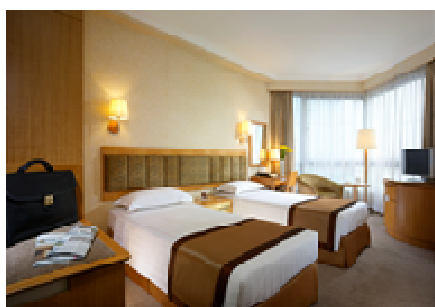
GLOUCESTER LUK KWOK HOTEL (4*)



Hotel situated in the heart of Wanchai's business district on Hong Kong Island, within walking distance to Hong Kong Convention and Exhibition Centre and the Hong Kong Academy of Performing Art. Only 5-minute walk to Wanchai MTR subway station.

(Room size: 22 – 24 sqm)

THE HARBOUR VIEW (3*)



Conveniently situated in the north side of Wanchai, the most bustling commercial and shopping district in Hong Kong. The Harbourview enjoys sophisticated transportation links, and it is just opposite to Hong Kong Convention & Exhibition Center.

(Premier Plus Room: 18 sqm)

KEW GREEN HOTEL WANCHAI HONG KONG (3*)



Situated on Hennessy Road, Kew Green Hotel Wanchai Hong Kong is located within 2-minute walk to/from MTR Wanchai station and 8-minute walk to/from the Hong Kong Convention and Exhibition Centre, giving you easy access to all major districts of Hong Kong.

(Room size: 17 – 19 sqm)